

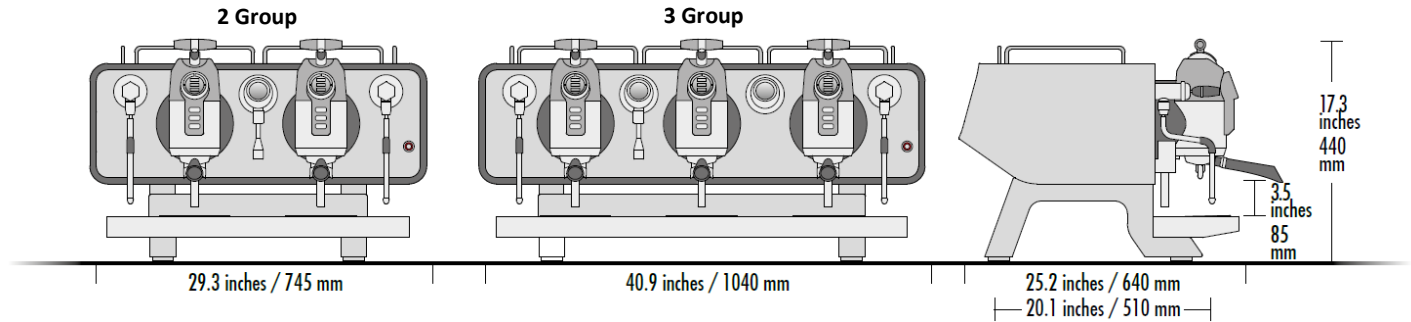


Sanremo Opera 2.0 Installation & Quick Start Guide

Disclaimer: Installation must be performed by professional technician. Improper installation can void warranty, permanently damage equipment and/or present burn & electrical hazard to installer/user. Consult with local municipality for official electrical and plumbing codes/guidelines.

Consult user manual for expanded installation, operation, and safety guidelines.

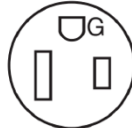

Dimensions



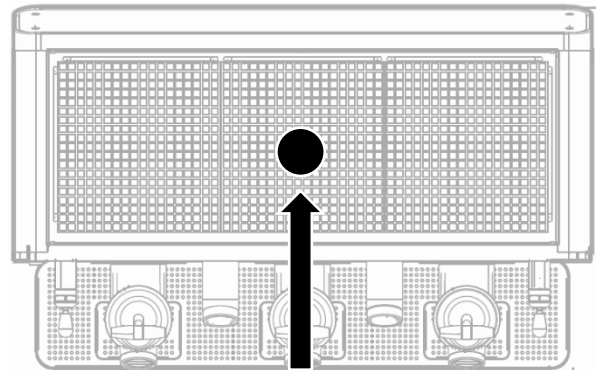
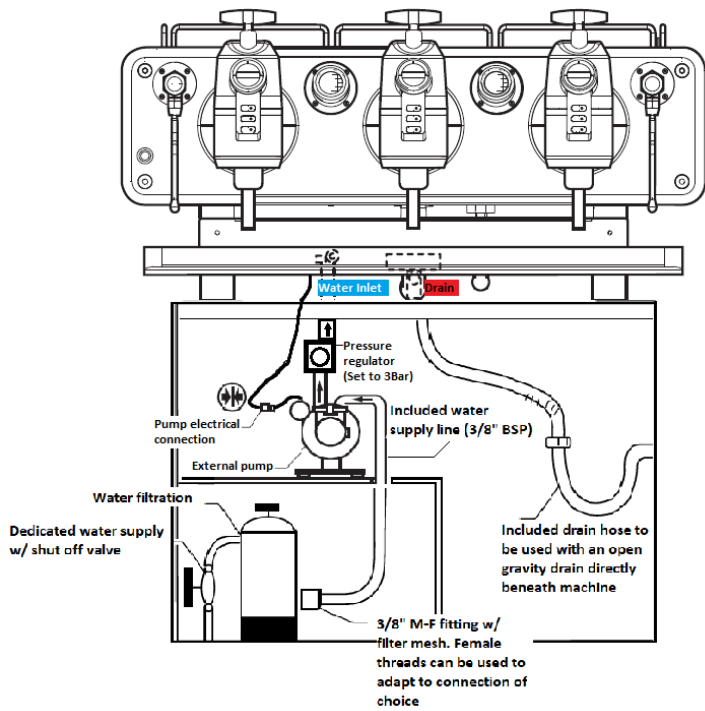
Water Requirements

<ul style="list-style-type: none"> • Dedicated cold water line with shut-off valve • Minimum incoming line pressure of 29 PSI / 2 BAR and max line pressure of 65 PSI / 4.5 BAR 	
Total Dissolved Solids (TDS):	30-150 ppm
Total Hardness:	Below 85 ppm
pH:	6.5-8
Chlorides:	5-15 ppm *Any presence of Chlorides can cause corrosion*
Total Alkalinity:	35-75 ppm
Total Chlorine:	0 ppm
Iron:	0 ppm
<p>Water levels outside of these parameters can void warranty. Consult with a water filtration professional for water testing and recommended systems.</p>	

Electrical Requirements

2 Group	3 Group	Receptacle & Plug Configuration
<ul style="list-style-type: none"> • Volts: 220 (voltage range of 208-240) 60Hz • Single phase / 3 wire (2 hot + 1 ground) • Watts: 3500 – 7700 (Ships @ 6500W) • Amp draw: Min: 15A Max: 33A (Ships @ 27A) • Receptacle / plug: NEMA 6-50 • Plug included 	<ul style="list-style-type: none"> • Volts: 220 (voltage range of 208-240) 60Hz • Single phase / 3 wire (2 hot + 1 ground) • Watts: 3500 – 8800 (Ships @ 6500W) • Amp draw: Min: 15A Max: 37A (Ships @ 27A) • Receptacle / plug: NEMA 6-50 • Plug included 	<div style="display: flex; justify-content: space-around; align-items: center;"> <div style="text-align: center;">  <p>6-50R</p> </div> <div style="text-align: center;">  <p>6-50P</p> </div> </div>

Connection & Counter Hole Diagrams



3" hole in counter recommended for passage of electrical cords & water/drain lines.

Counter hole placement recommended to be center of machine and 18.5" inward from edge of the drip tray.

External Pump Setup, First Start, Pumps Calibration & WiFi Connection Procedure For Group Programming

External Pump & Pressure Regulator Connections



Water Line Connection Orientation: Water mains (filtration) >> IN port on pump >> OUT port on pump to IN port on pressure regulator >> OUT port to water inlet fitting on machine

Hydraulic Circuit / Group Air Purge

- When machine completes auto-filling steam boiler, turn all groups on and confirm water flow from all groups. Shut groups off and perform first air purge.



For continuous flow program, long press paddle forward [away from barista] until group turns on



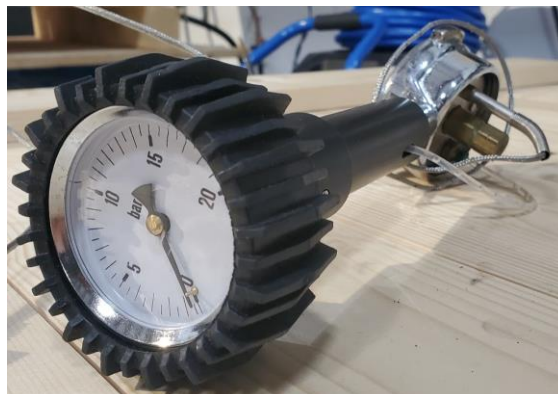
- Without the groups running, **Press and hold the air purge button for 10 seconds or until air can no longer be heard purging the circuit.**
- When machine has reached operating temperature, repeat above air purge procedure.
- After completing general circuit air purge, the groups boilers must be purged.
- Insert a blind equipped portafilter into the left most group and run it on continuous (press lever forward and hold until the group turns on). Once the ML's stop dropping on the display, press and hold the purge button whilst the group is running. Hold this down for around 3-5 seconds, release and turn off the group.
- Repeat for the remaining groups.

Group gear pump calibration (Requires SCACE tool)

Adjusting the PWM% value:

- On the group that you are calibrating, load a recipe that has pre-infusion and post-infusion disabled but with a main extraction pressure of 9 bar. You will use this to verify the pressure output of the group pump.
- Remove the cup tray from the top of your machine which will allow you to access the display in the back left of the machine.
- With the machine on and top off, press and hold the bottom of the 3 buttons on group 1 (left most group). Keep holding the button until you see clock adjust on the display in the machine.
- Once that pops up, release the button and now use that same button to cycle through the menu until you reach the PWM% value for the group that is not performing. Use the top of the 3 buttons to increase the value and the middle button to decrease the value.
- Use the lower button to cycle out of programming.
- Run the 9 bar extraction recipe using your Scace tool, confirm the 9 bar value (135 PSI). If you are not reading 135 PSI on the Scace, re-adjust the PWM value.
- Continue across the groups to confirm equal pressure output.

SCACE Tool



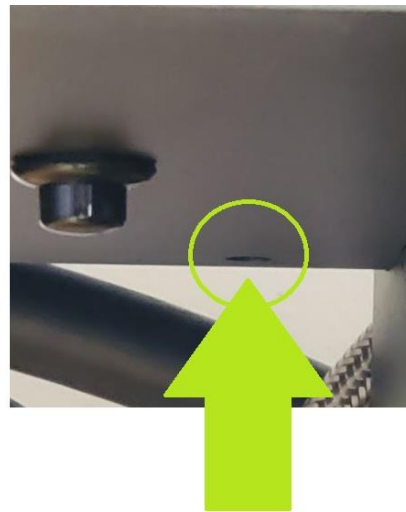
Connecting to 'Sanremo Connector' WiFi application

- Download 'Sanremo Connector' from Google Play or iTunes on a phone or tablet
- Before accessing the application, connect to the Opera via WiFi (Search for SANREMOXXXXXX)
- When prompted for a password, locate the WiFi info sticker next to the air purge button and refer to the WPA code:



Once the WiFi connection is established, open the 'Sanremo Connector' application to access group recipe programming

Adjusting Cold Water Mix For Hot Water (Tea) Tap



- Locate the cold water mix solenoid access hole and insert a long/skinny flat head screwdriver
- Turn clockwise to decrease cold water flow or counter clockwise to increase cold water flow

Individual Group Cleaning Mode





Warranty Terms and Conditions
***** Submit at time of installation *****

Client Name		Date	
Machine Model		Machine Serial N°	

N° of Groups	Supply Voltage	Location Address / Type	Install Date	Installed By

Water Quality Report (Before & After Filtration)

TDS:		ppm
Total Hardness:		ppm
pH:		
Chlorides:		ppm
Total Alkalinity:		ppm
Total Chlorine:		ppm
Iron:		ppm

TDS:		ppm
Total Hardness:		ppm
pH:		
Chlorides:		ppm
Total Alkalinity:		ppm
Total Chlorine:		ppm
Iron:		ppm

Water Filtration Make / Model / Details (Please Send Photos of Installation and Filtration Setup)

Terms & Conditions

SANREMO Srl guarantees that the machines and the components supplied are free from defective material and / or workmanship for a period of twelve (12) months from invoice date.

The warranty does not cover any faults or malfunctions due to normal wear and tear, inappropriate use and / or use not in accordance with normal operation, the use of non-original spare parts and non-compliance with what is indicated in the use and maintenance manual delivered together with the machine, accidental events, unauthorized modifications or adaptations, tampering, anomalies caused by electrical and hydraulic systems or inadequate water filtering and insects infestation.

In the case a failure is found; labor, diagnosis fees, travel fees are not included in the warranty, nor are freight costs in cases of shipping.

During the warranty period, all parts that are deemed defective based on the judgment of SANREMO TSD (Technical Service Department) will be replaced.

SANREMO Srl has the right to make changes to its products at any time necessary for technical and / or aesthetic reasons, reserving all rights deriving from these changes.

Consult with Sanremo TSD prior to performing any warranty repairs.

Recommended Water Specifications

- Dedicated cold water line with shut-off valve
- Minimum incoming line pressure of 29 PSI / 2 BAR and max line pressure of 65 PSI / 4.5 BAR

Total Dissolved Solids (TDS):	30-150 ppm
Total Hardness:	Below 85 ppm
pH:	6.5-8
Chlorides:	5-15 ppm
<small>*Any presence of Chlorides can cause corrosion*</small>	
Total Alkalinity:	35-75 ppm
Total Chlorine:	0 ppm
Iron:	0 ppm

Water levels outside of these parameters can void warranty. Consult with a water filtration professional for water testing and recommended systems.

E-mail Form and supporting media to tech@sanremous.com

I have read and acknowledge the above

Client Name:		Client Signature:		Date:	
---------------------	--	--------------------------	--	--------------	--